

In This Issue:

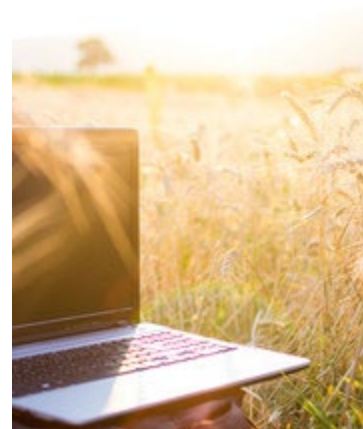
- [USDA Offers Options for Signing and Sharing Documents Online](#)
- [USDA Encourages Producers to Enroll in Grassland CRP](#)
- [Waiver of DCIA Compliance for Commodity and Farm Storage Facility Loan Programs](#)
- [USDA Expands Farmers.gov to Include Farm Records](#)
- [Environmental Review Required Before Project Implementation](#)
- [Foreign Buyers Notification](#)
- [Submit Loan Requests for Financing Early](#)

USDA Offers Options for Signing and Sharing Documents Online

Farmers and ranchers working with USDA's Farm Service Agency or Natural Resources Conservation Service can now sign and share documents online in just a few clicks. By using Box or OneSpan, producers can digitally complete business transactions without leaving their homes or agricultural operations. Both services are free, secure, and available for multiple FSA and NRCS programs.

Box is a secure, cloud-based site where FSA or NRCS documents can be managed and shared. Producers who choose to use Box can create a username and password to access their secure Box account, where documents can be downloaded, printed, manually signed, scanned, uploaded, and shared digitally with Service Center staff. This service is available to any FSA or NRCS customer with access to a mobile device or computer with printer connectivity.

OneSpan is a secure eSignature solution for FSA and NRCS customers. Like Box, no software downloads or eAuthentication is required for OneSpan. Instead, producers interested in eSignature through OneSpan can confirm their identity through two-factor



authentication using a verification code sent to their mobile device or a personalized question and answer. Once identity is confirmed, documents can be reviewed and e-signed through OneSpan via the producer's personal email address. Signed documents immediately become available to the appropriate Service Center staff.

Box and OneSpan are both optional services for customers interested in improved efficiency in signing and sharing documents with USDA, and they do not replace existing systems using eAuthentication for digital signature. Instead, these tools provide additional digital options for producers to use when conducting business with FSA or NRCS.

USDA Service Center staff are available to help producers get started with Box and OneSpan through a few simple steps. Please visit farmers.gov/service-locator to find your local office and let Service Center staff know you're interested in signing and sharing documents through these new features. In most cases, one quick phone call will be all that is needed to initiate the process.

Visit farmers.gov/mydocs to learn more about Box and OneSpan, steps for getting started, and additional resources for conducting business with USDA online.

To learn more about program flexibilities and Service Center status during the coronavirus pandemic, visit farmers.gov/coronavirus.

USDA Encourages Producers to Enroll in Grassland CRP



The U.S. Department of Agriculture (USDA) encourages producers and landowners to enroll in the Grassland Conservation Reserve Program (CRP) starting next week through May 13, 2022. Grassland CRP provides a unique opportunity for farmers, ranchers, and agricultural landowners to keep land in agricultural production and supplement their income while improving their soils and permanent grass cover. The program had its highest enrollment in history in 2021 and is part of the Biden-Harris Administration's broader effort to equip producers with the tools they need to help address climate change and invest in the long-term health of our natural resources.

[Grassland CRP](#) is a federally funded voluntary working lands program. Through the program, USDA's Farm Service Agency (FSA) provides annual rental payments to landowners to maintain and conserve grasslands while allowing producers to graze, hay, and produce seed on that land. Maintaining the existing permanent cover provides several benefits, including reducing erosion, providing wildlife habitat and migration corridors, and capturing and maintaining carbon in the soil and cover.

FSA provides participants with annual rental payments and cost-share assistance. The annual rental rate varies by county with a national minimum rental rate of \$13 per acre for this signup. Contract duration is 10 or 15 years.

Grassland CRP National Priority Zones

Because Grassland CRP supports not only grazing operations but also biodiversity and conserving environmentally sensitive land such as that prone to wind erosion, FSA created two [National Priority Zones](#) in 2021: the Greater Yellowstone Migration Corridor and Dust Bowl Zone. As part of the Biden-Harris Administration's focus on conservation in important wildlife corridors and key seasonal ranges, for this year's signup, FSA is expanding the Greater Yellowstone Wildlife Migration Corridor Priority Zone to include seven additional counties across Montana, Wyoming, and Utah, to help protect the big-game animal migration corridor associated with Wyoming elk, mule deer, and antelope.

Offers within one of these National Priority Zones will receive an additional 15 ranking points and \$5 per acre if at least 50% of the offer is located in the zone.

Alongside Grassland CRP, producers and landowners can also enroll acres in Continuous CRP under the ongoing sign up, which includes projects available through the Conservation Reserve Enhancement Program (CREP) and State Acres for Wildlife Enhancement (SAFE).

Broadening Reach of Program

As part of the Agency's Justice40 efforts, producers and landowners who are historically underserved, including beginning farmers and military veterans, will receive 10 additional ranking points to enhance their offers.

Additionally, USDA is working to broaden the scope and reach of Grassland CRP by leveraging the [Conservation Reserve Enhancement Program](#) (CREP) to engage historically underserved communities. CREP is a partnership program that enables states, Tribal governments, non-profit, and private entities to partner with FSA to implement CRP practices and address high priority conservation and environmental objectives. Interested entities are encouraged to contact FSA.

More Information on CRP

Landowners and producers interested in Grassland CRP should contact their local [USDA Service Center](#) to learn more or to apply for the program before the May 13 deadline. Additionally, fact sheets and other resources are available at fsa.usda.gov/crp.

Signed into law in 1985, CRP is one of the largest voluntary private-lands conservation programs in the United States. The working lands signup announced today demonstrates how much it has evolved from the original program that was primarily intended to control soil erosion and only had the option to take enrolled land out of production. The program has expanded over the years and now supports a greater variety of conservation and wildlife benefits, along with the associated economic benefits.

Waiver of DCIA Compliance for Commodity and Farm Storage Facility Loan Programs

On January 27, 2021, the Biden-Harris Administration suspended all debt collections, foreclosures, and other adverse actions for borrowers of direct farm loans and Farm Storage Facility Loans (FSFL) through USDA's Farm Service Agency (FSA) because of the national public health emergency caused by the Coronavirus pandemic.

It has been determined that the January 2021 suspension included a waiver of the Debt Collection Improvement Act (DCIA) noncompliance for issuing new Marketing Assistance Loans (MAL), Loan Deficiency Payments (LDP) or FSFL to borrowers who are in delinquent status with FSFL or farm loans.

Under normal circumstances, DCIA specifies that a person cannot obtain Federal financial assistance in the form of loans (other than disaster loans), loan insurance, or guarantees if that person has delinquent Federal non-tax debt. MAL, LDP, and FSFL programs administered by FSA are currently subject to these statutory constraints.

FSA county offices will review MALs, LDPs, and FSFLs that were previously denied on or after January 27, 2021, because of DCIA noncompliance. Offices will notify applicants of the waiver provisions and the opportunity to obtain a loan. All applicable eligibility requirements remain in place with the exception of DCIA waiver.

Reach out to your local FSA office for more information. To find your local office, visit farmers.gov/service-locator.

USDA Expands Farmers.gov to Include Farm Records



Producers with farmers.gov accounts can now access farm records and maps online, the latest self-service feature added to the U.S. Department of Agriculture (USDA) website.

You can quickly and easily access your land information in real time by desktop computer, tablet or phone. Capabilities include:

- View, print and export detailed farm records such as cropland, base acres, yields, CRP acres, land ownership details, and much more;
- View, print and export farm/tract maps that can be provided to lenders, chemical or fertilizer providers, and FSA for reporting acreage and crop insurance agents; and
- Export common land unit (field) boundaries as ESRI shapefiles.

The ability to access these records on demand without a visit to the service center saves you time and money.

[Farmers.gov](https://farmers.gov) now includes the most popular functionalities from FSAFarm+, the FSA portal for producers, while providing enhanced functionality and an improved user experience. A new Enhancement expands the scope of accessibility to include farmers

and ranchers who are members of an entity, as well as people with a power of attorney form (FSA-211) on file with FSA.

Managing USDA Business Online

Using farmers.gov, producers, entities and those acting on their behalf can also:

- View, upload, download, and e-sign conservation documents.
- Request financial assistance, including submitting a program application.
- View and submit conservation requests.
- View technical references and submit questions.
- Access information on current and past conservation practices, plans and contracts.
- Report practice completion and request practice certification.
- View farm loan and interest information (producers only).

Future plans include adding the ability to import and view other shapefiles, such as precision agriculture planting boundaries.

To access your information, you'll need a [USDA eAuth account](#) to login to farmers.gov. After obtaining an eAuth account, producers should visit [farmers.gov](#) and sign into the site's authenticated portal via the [Sign In/Sign Up link](#) at the top right of the website. Google Chrome, Mozilla Firefox or Microsoft Edge are the recommended browsers to access the feature.

In addition to the self-service features available by logging into farmers.gov, the website also has ample information on USDA programs, including pandemic assistance, farm loans, disaster assistance, conservation programs and crop insurance. Recently, USDA updated the navigation and organization of the site as well as added some new webpages, including "[Get Involved](#)," "[Common Forms](#)," and "[Translations](#)." [Learn more about these changes](#).

Environmental Review Required Before Project Implementation

The National Environmental Policy Act (NEPA) requires Federal agencies to consider all potential environmental impacts for federally funded projects before the project is approved.

For all Farm Service Agency (FSA) programs, an environmental review must be completed before actions are approved, such as site preparation or ground disturbance. These programs include, **but are not limited to**, the Emergency Conservation Program (ECP), Farm Storage Facility Loan (FSFL) program and farm loans. If project implementation begins before FSA has completed an environmental review, the request will be denied. Although there are exceptions regarding the Stafford Act and emergencies,

it's important to wait until you receive written approval of your project proposal before starting any actions.

Applications cannot be approved until FSA has copies of all permits and plans. Contact your local FSA office early in your planning process to determine what level of environmental review is required for your program application so that it can be completed timely.

Foreign Buyers Notification

The Agricultural Foreign Investment Disclosure Act (AFIDA) requires all foreign owners of U.S. agricultural land to report their holdings to the Secretary of Agriculture. Foreign persons who have purchased or sold agricultural land in the county are required to report the transaction to FSA within 90 days of the closing. Failure to submit the [AFIDA form](#) could result in civil penalties of up to 25 percent of the fair market value of the property. County government offices, realtors, attorneys and others involved in real estate transactions are reminded to notify foreign investors of these reporting requirements. The data gained from these disclosures is used in the preparation of periodic reports to the President and Congress concerning the effect of such holdings upon family farms and rural communities. Click [here](#) for more information on AFIDA.

Submit Loan Requests for Financing Early



The Farm Loan team in your County is already working on operating loans for spring 2022 and asks potential borrowers to submit their requests early so they can be timely processed. The farm loan team can help determine which loan programs are best for applicants.

FSA offers a wide range of low-interest loans that can meet the financial needs of any farm operation for just about any purpose. The traditional **farm operating and farm ownership loans** can help large and small farm operations take advantage of early purchasing discounts for spring inputs as well expenses throughout the year.

Microloans are a simplified loan program that will provide up to \$50,000 for both Farm Ownership and Operating Microloans to eligible applicants. These loans, targeted for smaller and non-traditional operations, can be used for operating expenses, starting a new operation, purchasing equipment, and other needs associated with a farming operation. Loans to beginning farmers and members of underserved groups are a priority.

Other types of loans available include:

Marketing Assistance Loans allow producers to use eligible commodities as loan collateral and obtain a 9-month loan while the crop is in storage. These loans provide cash

flow to the producer and allow them to market the crop when prices may be more advantageous.

Farm Storage Facility Loans can be used to build permanent structures used to store eligible commodities, for storage and handling trucks, or portable or permanent handling equipment. A variety of structures are eligible under this loan, including bunker silos, grain bins, hay storage structures, and refrigerated structures for vegetables and fruit. A producer may borrow up to \$500,000 per loan.

Mississippi FSA State Office

6311 Ridgewood Road, Suite W100

Jackson, MS 39211

Phone: 601-965-4300

State Executive Director

Thaddeus Fairley, Sr.

USDA is an equal opportunity provider, employer and lender. To file a complaint of discrimination, write: USDA, Office of the Assistant Secretary for Civil Rights, Office of Adjudication, 1400 Independence Ave., SW, Washington, DC 20250-9410 or call (866) 632-9992 (Toll-free Customer Service), (800) 877-8339 (Local or Federal relay), (866) 377-8642 (Relay voice users).